

SACE Electronic Examinations

SACE Exam Browser Installation Instruction Sheet

Introduction

This document explains how to install and test run the SACE Exam Browser for IT Managers at schools preparing to deliver SACE Electronic Examinations.

SACE Exam Browser Overview

The SACE Exam Browser is a web browser-environment to carry out online exams safely. The software changes any computer/device into a secure workstation. It regulates access to resources like system functions, other websites and applications and prevents unauthorised resources being used during an exam.

IT Managers – please note the SACE Exam Browser installation will lockout all other applications during the test run.

Purpose

The purpose of SACE Exam Browser install/test run is to ensure that the SACE electronic examinations can be run on all types of devices that the students could potentially use at the exam at your particular school. Please refer to the device minimum requirements specification below.

System Requirements

- 1. Internet Connection*
 - 2. Administration rights on the target devices.*
-

Version – *Please note this document version includes instructions for Mac devices and updated links for Windows retesting of issues.*

Contents

<i>SACE Electronic Examinations</i>	1
<i>SACE Exam Browser Overview</i>	1
<i>Purpose</i>	1
<i>System Requirements</i>	1
<i>Contents</i>	2
<i>Minimum Specs</i>	3
<i>Recommended Specs</i>	3
<i>Part 1 – SACE Exam Browser Installation</i>	4
<i>Windows Devices</i>	4
<i>Mac Devices</i>	7
<i>Mass Deployment Option</i>	8
<i>Part 2 – SACE Exam Browser Test Run</i>	8

Minimum Specs

Device Type	Laptop, Desktop
Device Operating System	Windows 10 (Version 1909), Mac OS X 10.9+
Device Memory	2GB
Device Hard Drive	2GB free space
Screen	13 Inch
Keyboard	Wired, Wireless
Pointing Device	Mouse, trackpad
Connectivity	Able to connect to the internet via Wired or Wireless connection
Power	3 hours of available power, either connected power in the exam room or battery power to power the device for a minimum of 3 hours
Administrator Access	Able to install third party software on the device

Recommended Specs

Device Type	Laptop, Desktop
Device Operating System	Windows 10 (Version 2004) , Mac OS X 10.9+
Device Memory	4GB
Device Hard Drive	2GB free space
Screen	15.4 inch (laptop), 17-23 inch (desktop)
Keyboard	Wired, Wireless
Pointing Device	Mouse, trackpad
Connectivity	Able to connect to the internet via Wired or Wireless connection
Power	3 hours of available power, either connected power in the exam room or battery power to power the device for a minimum of 3 hours
Administrator Access	Able to install third party software on the device

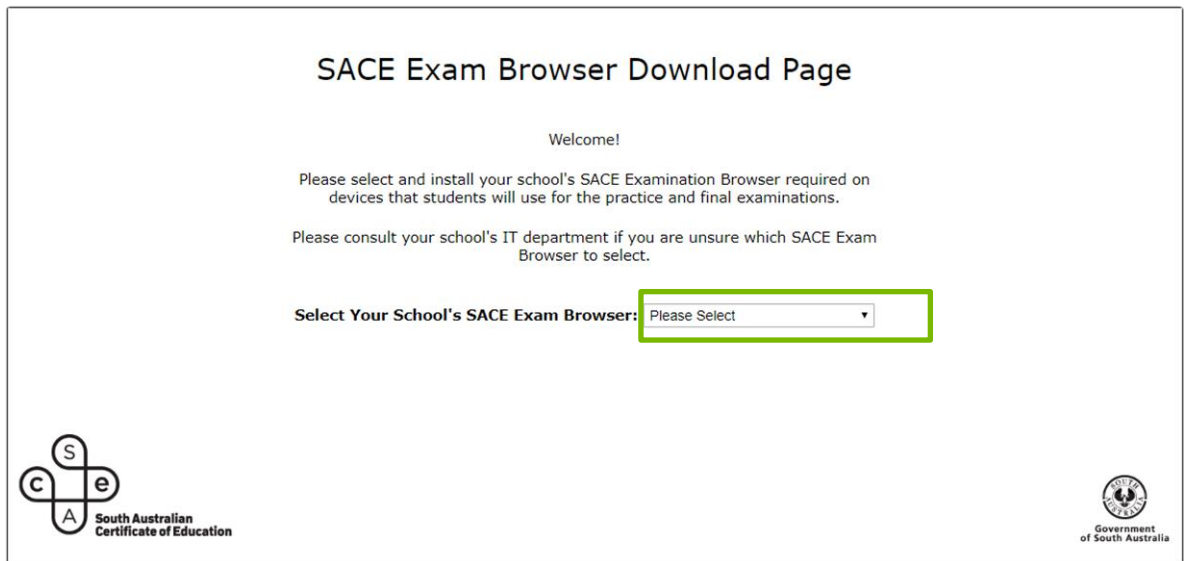
Part 1 – SACE Exam Browser Installation

Windows Devices

1. Click on the following download link provided.

<https://e-exams.sace.sa.edu.au/forms/show/id/1>

2. The below landing page will appear. Select your School's SACE Exam Browser and click to download the SACE Exam Browser file. Allow time to process.





SACE Exam Browser Download Page

Welcome!

Please select and install your school's SACE Examination Browser required on devices that students will use for the practice and final examinations.

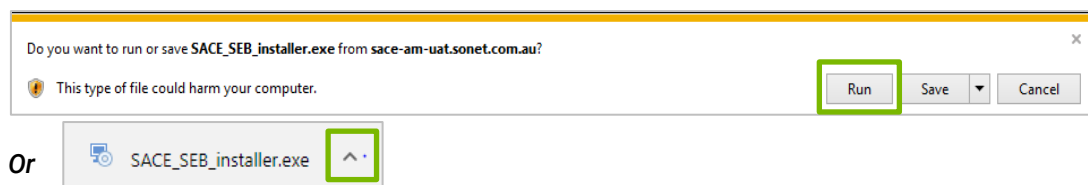
Please consult your school's IT department if you are unsure which SACE Exam Browser to select.

Select Your School's SACE Exam Browser:

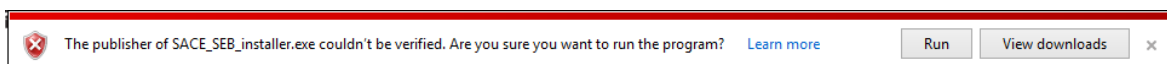
 

3. Depending on the browser, Chrome, Safari etc., an installation message/banner will pop up and click either "Run" or "Open" to continue. Allow time to process.

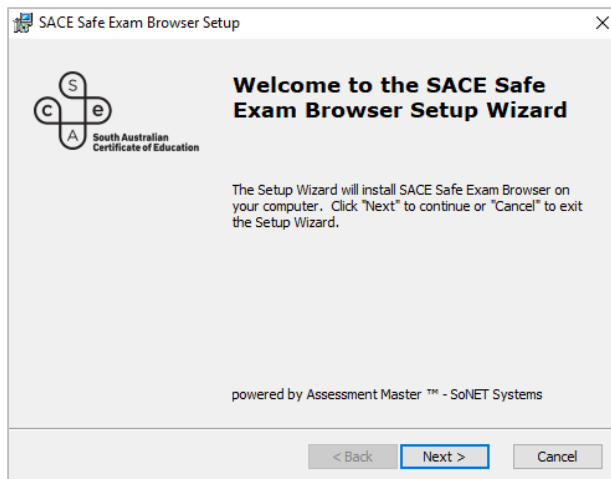
Examples



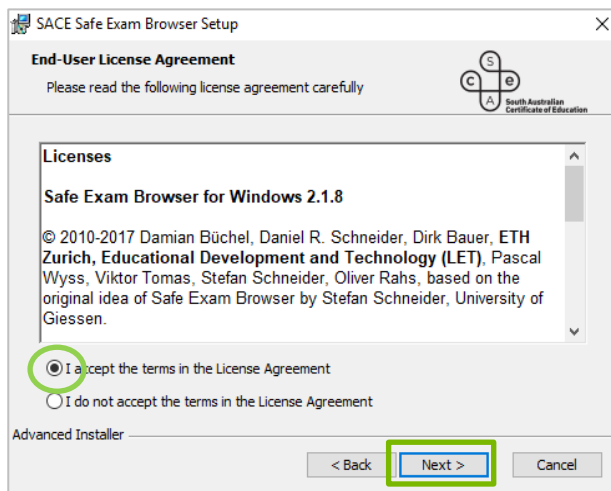
4. If a "Security Warning" message/banner is received, click "Run" or "Run Anyway".



5. The "Welcome to the SACE Safe Exam Browser Setup Wizard" window will appear and click "Next>".



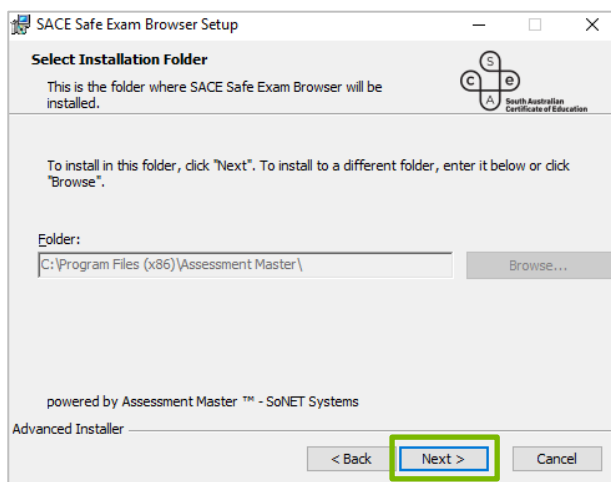
6. At the "License Agreement" window select the "I accept" button and then click "Next>".



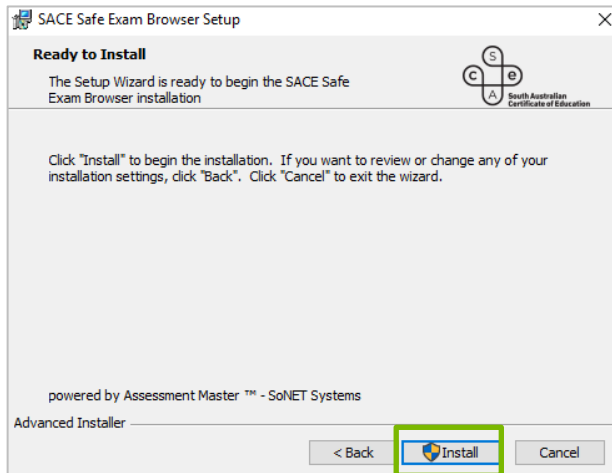
Note:

The End-User license agreement relates to using Mozilla Firefox as the underlying browser engine for Safe Exam Browser. The agreement contains approval for the use of Mozilla software with terms and conditions to ensure distributors cannot charge clients for the use of the software and Mozilla is indemnified from any liability for any damages caused using the software.

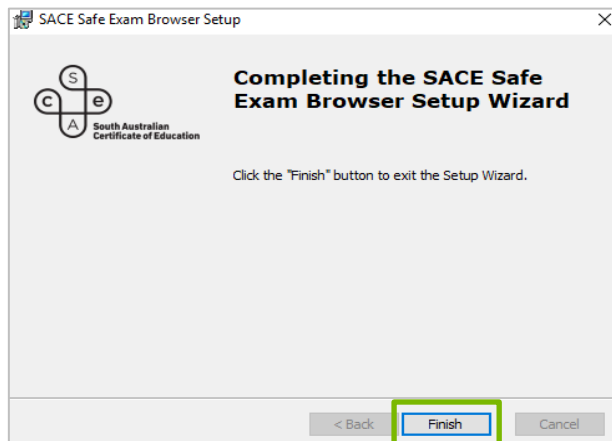
7. The "Select Installation Folder" window will appear and click "Next>".



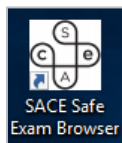
8. The next window to display is "Ready to Install" and click "Install".
Allow time for the installation to run.



9. Click the "Finish" button to exit "Completing the SACE Safe Exam Browser Set-up Wizard".



10. To confirm the SACE Exam browser installation is successful on the device,
- Check the SACE Exam Browser shortcut icon appears on the desktop.



Or

- Check via Start Menu>All Programs>SACE SafeExamBrowser.

11. If not successful, refer to the troubleshooting questions on page 6 and repeat Steps 1-9.

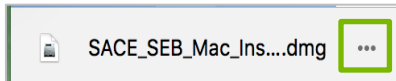
12. If successful, close the browser and go to Part 2.

Mac Devices

1. Click on the following url link provided for Mac devices

<https://e-exams.sace.sa.edu.au/forms/show/id/1>

2. The below message will appear at the bottom left hand corner of the screen and click in the banner to install the SACE Exam Browser.



3. The below window will appear confirming successful SACE Exam browser installation.



4. Drag the SACE Safe Exam Browser icon to the Applications folder.
5. Close the above window.

Mass Deployment Option

The latest release of SEB is now in the MSI filetype. This provides more options for IT managers in terms of mass deployment.

With administrative privileges invoked the following commands can be used for silent install.

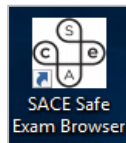
```
msiexec.exe /i <PATH TO INSTALLER>SACE_SEB_2.3_2021.msi /qn – Full Silent Install  
msiexec.exe /i <PATH TO INSTALLER>SACE_SEB_2.3_2021.msi /passive – Progress bar visible
```

With administrative privileges invoked the following commands can be used for silent uninstall.

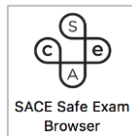
```
msiexec.exe /x <PATH TO INSTALLER>SACE_SEB_2.3_2021.msi – Uninstall with prompt  
msiexec.exe /x <PATH TO INSTALLER>SACE_SEB_2.3_2021.msi /qn – Uninstall without prompt
```

Part 2 – SACE Exam Browser Test Run

1. Click on the “SACE Exam Browser” shortcut icon on the device.
Allow time for Application to load.

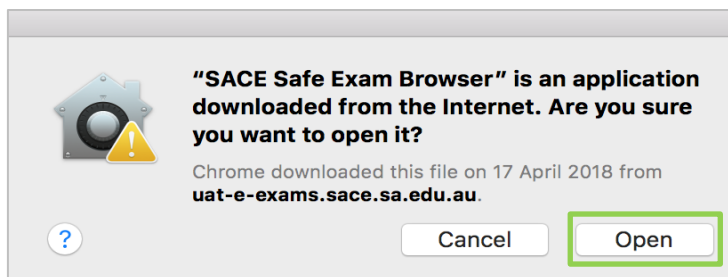


Windows



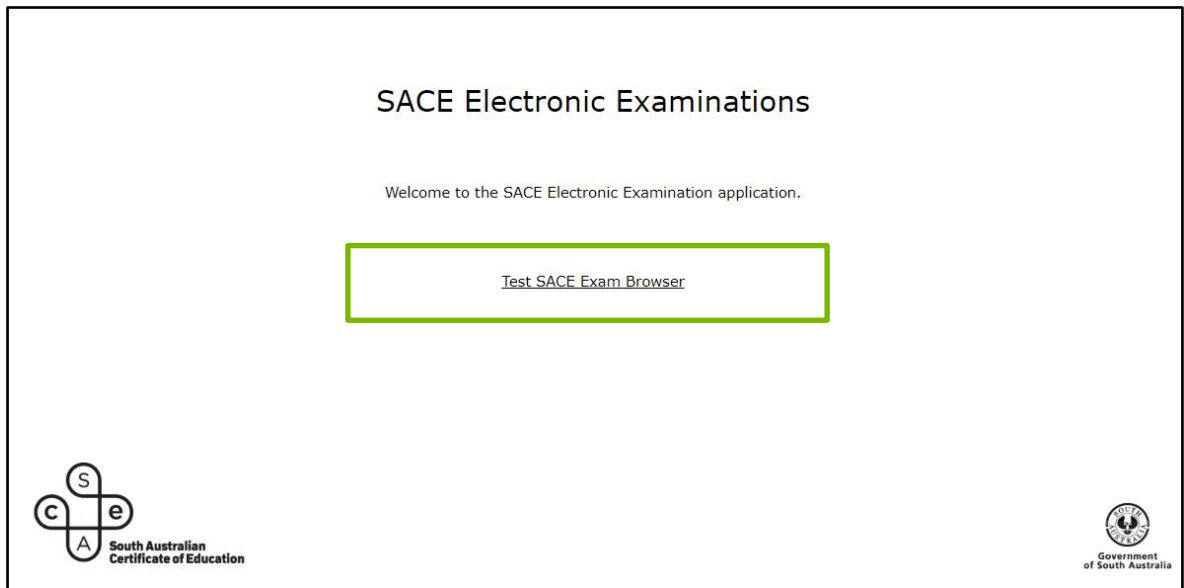
MAC

2. Select Open if the below window pops up

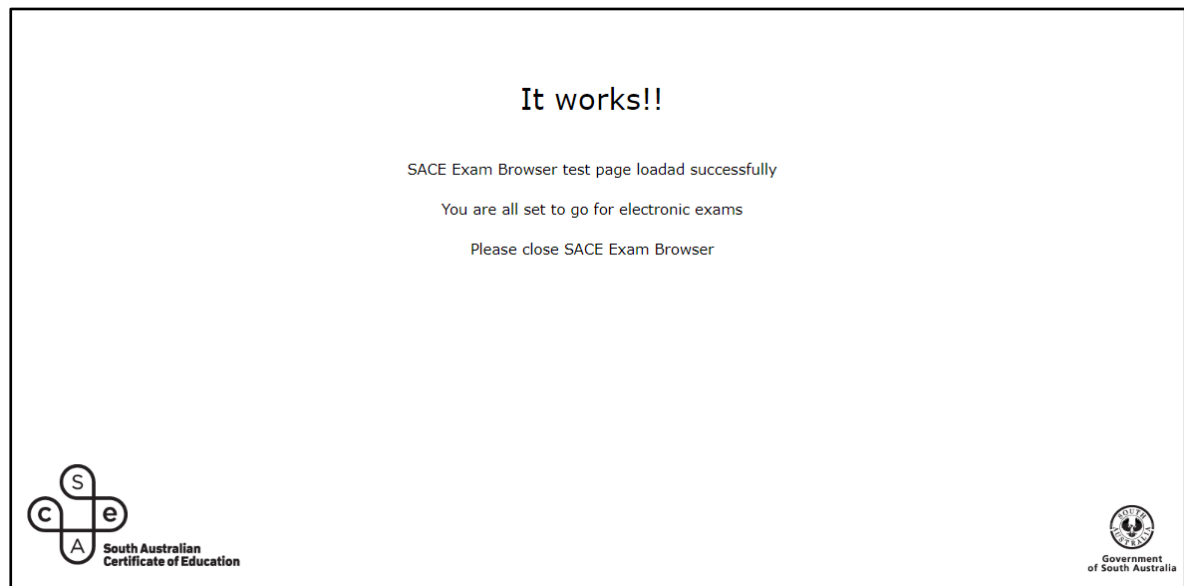


3. The “SACE Electronic Examinations” window will open

4. Click "Test SACE Exam Browser"



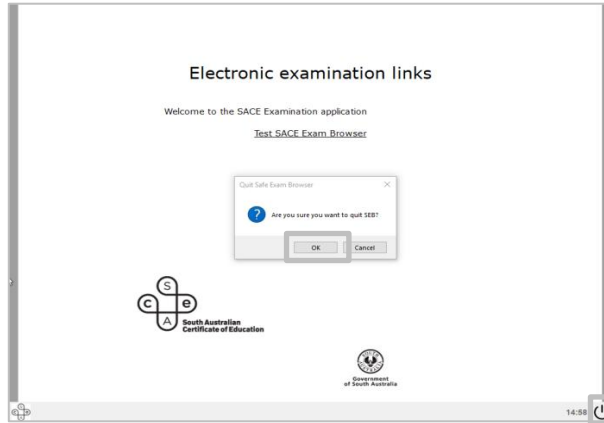
5. The "It works" page will open



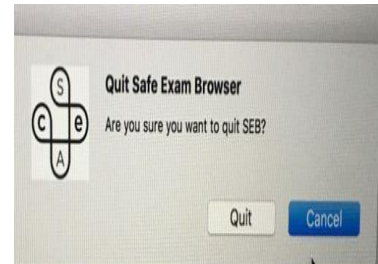
6. Exit the SACE Exam Browser by

a. Clicking  in bottom Right Hand corner and then

b. A pop up message box "Are you sure you want to exit/Quit SEB?" and for Windows devices, click "OK" and for Mac, click "Quit"



Windows



MAC